

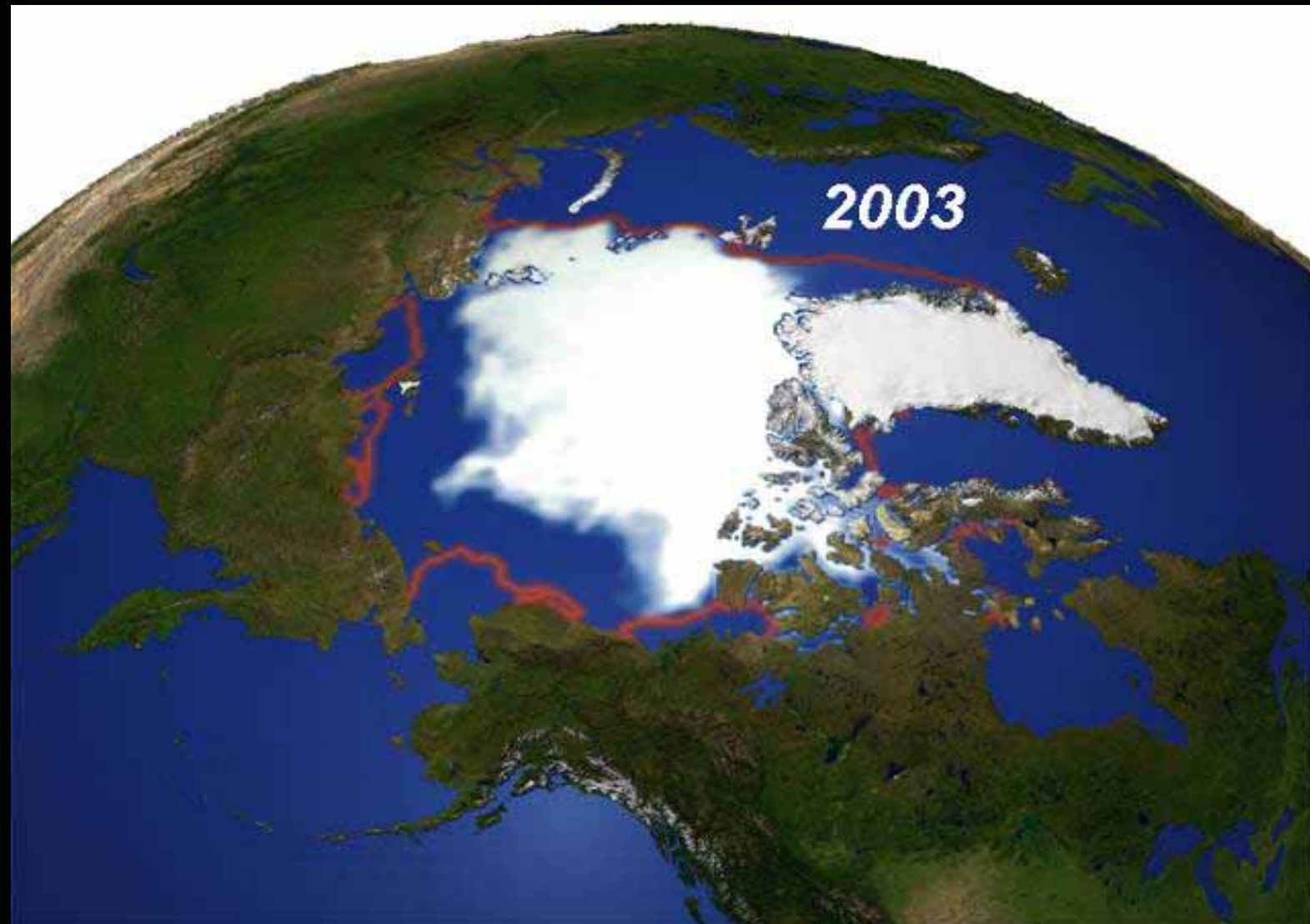
World Environment Day—June 5, 2007
Washington, DC

Melting Ice—A Hot Topic?

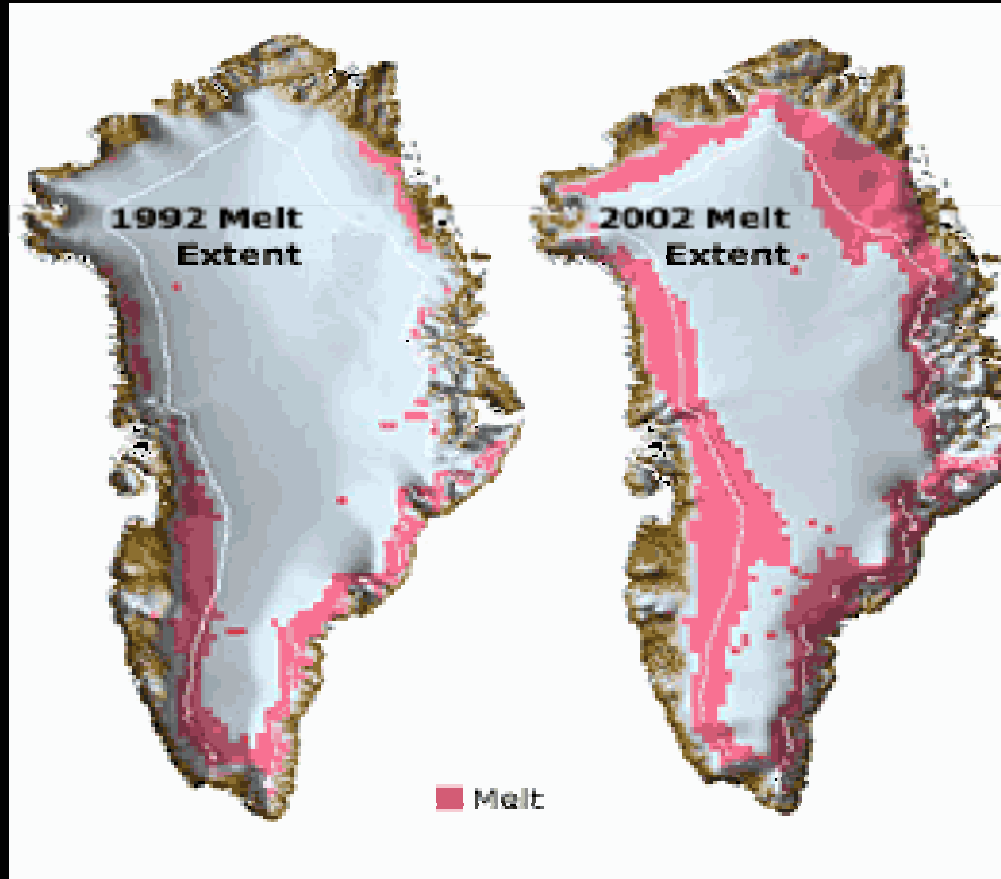
Evidence of Melting from
UNEP Atlas of Our Changing
Environment



Dramatic changes in Arctic Sea Ice

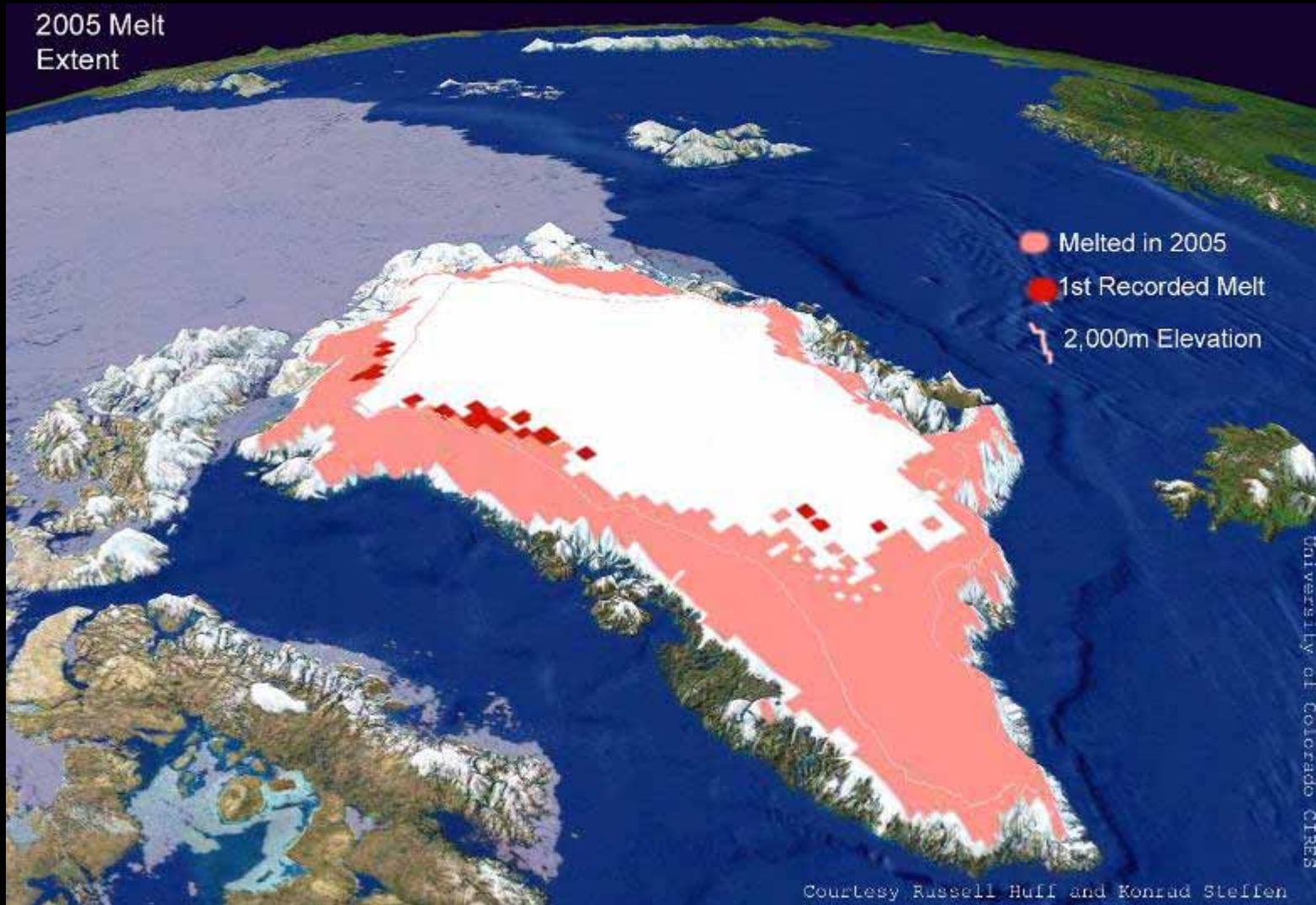


Greenland Ice Sheet



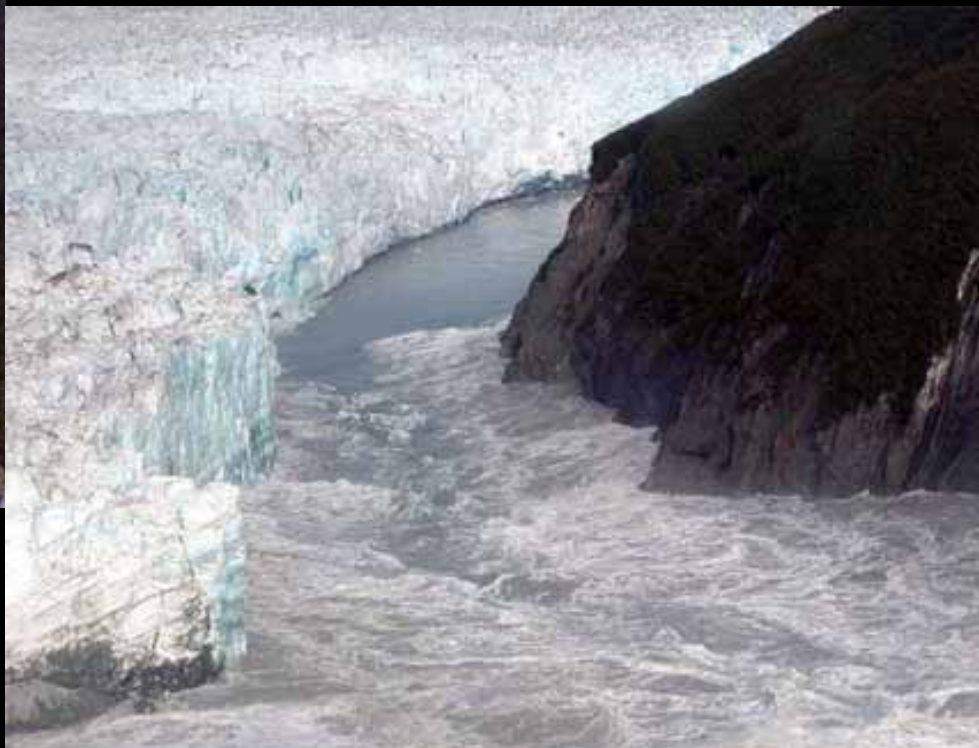
Greenland is now losing 20 percent more mass than it receives from new snowfall each year.

Greenland Ice Sheet





Hubbard Glacier advances United States



Retreat of Columbia Glacier, Alaska and Arapaho Glacier, Colorado, United States



Columbia Glacier c. 1980



Columbia Glacier 2005



Arapaho Glacier 1898



Arapaho Glacier 2003

- Since 1980, the Columbia glacier has retreated about 15 kilometers but its retreat has not been directly linked to rise in global temperatures
- Arapaho glacier has thinned by 40 meters since 1960

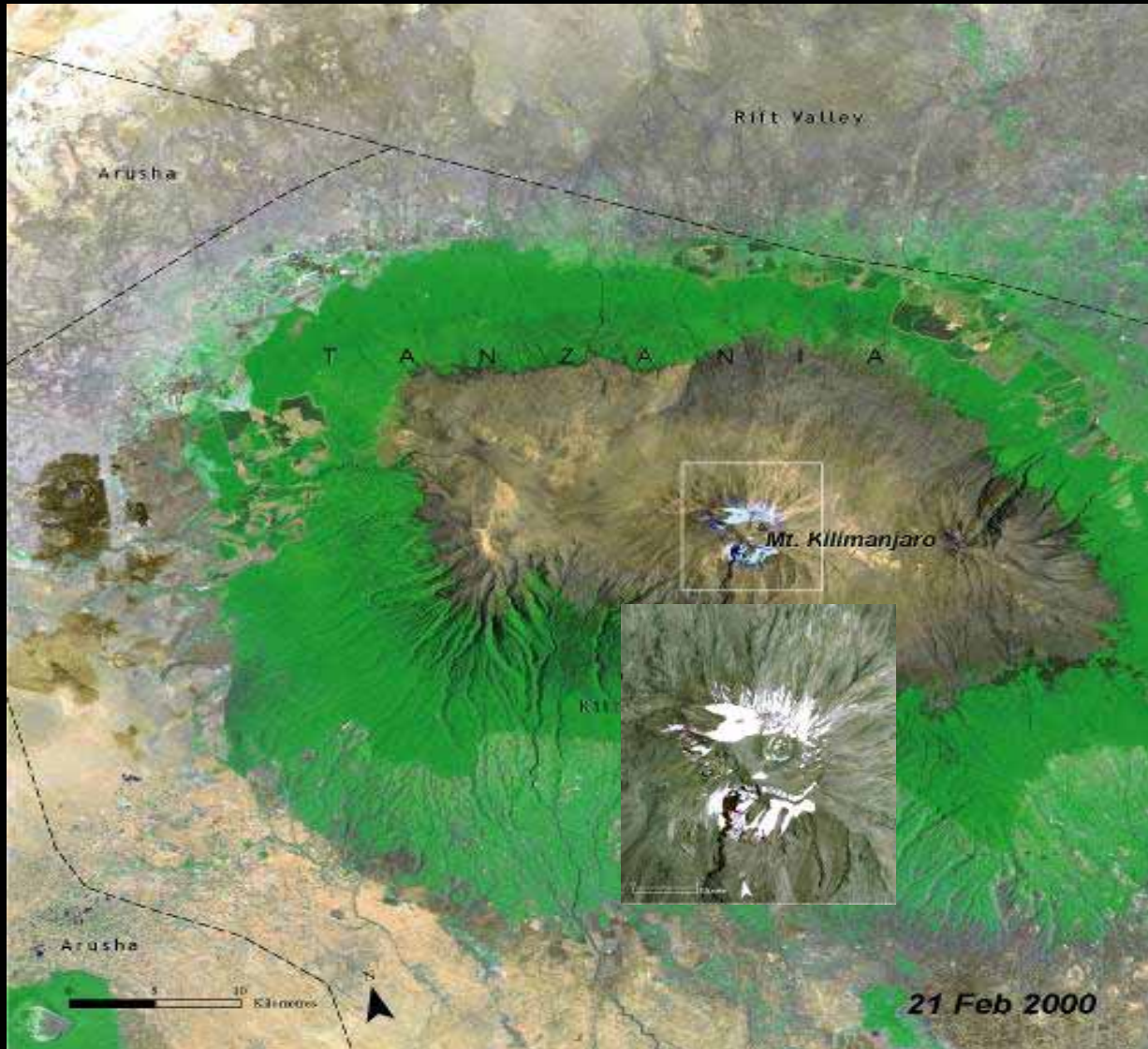
Ayles Ice Shelf, Ellesmere Island, Canada



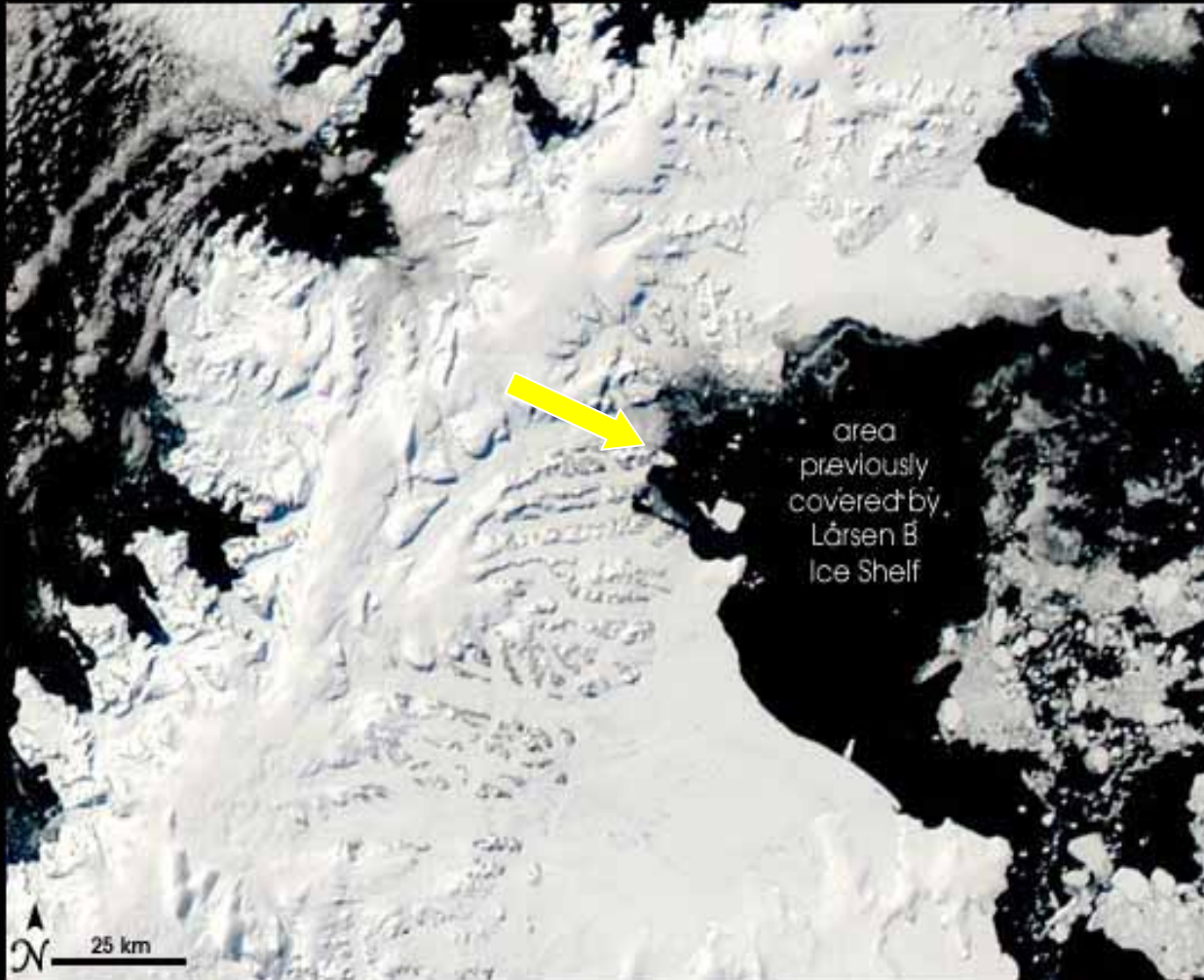
Ayles Ice Shelf on Ellesmere Island, broke free on August 13, 2005 and drifted out to the sea



Disappearing Icecap of Mt. Kilimanjaro, Tanzania

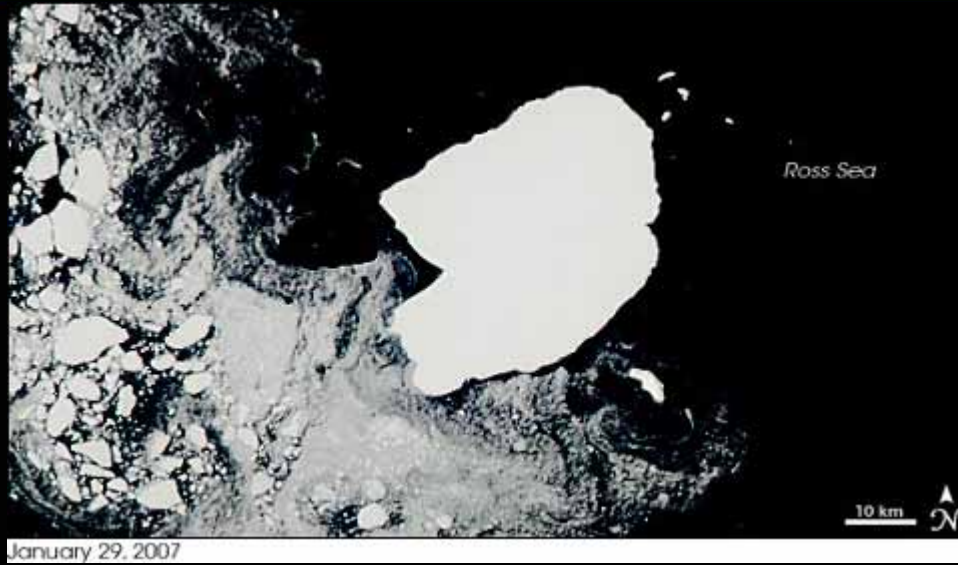


Disintegration of the Larsen B Ice Shelf, Antarctic Peninsula

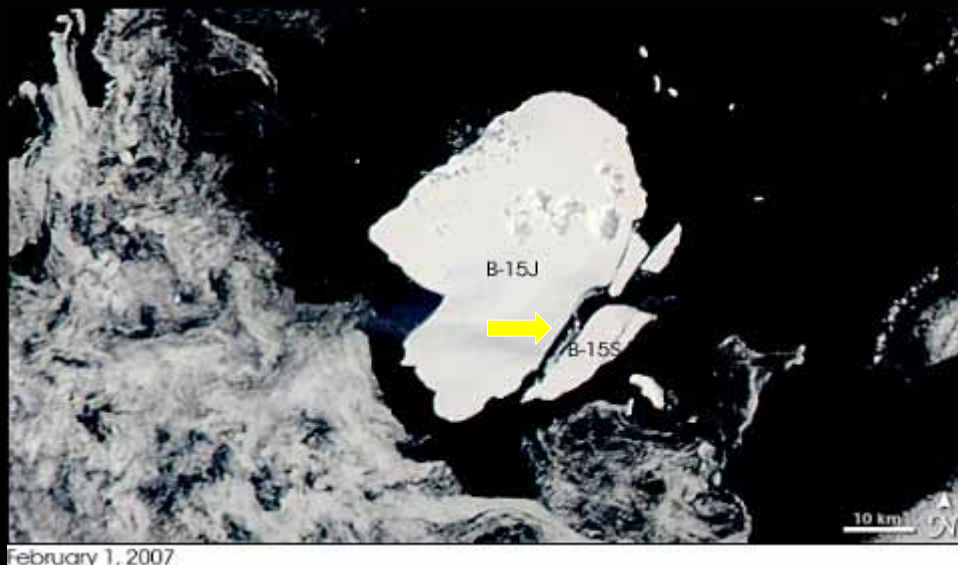


The ice shelf disintegrated suddenly in March 2002 due to warm summer temperatures

Breakup of Antarctica's Ross Ice Shelf



January 29, 2007



February 1, 2007

- An iceberg (B-15J) of size of a small United States state cracked off the Antarctica's Ross Ice Shelf in March 2000
- On February 1, 2007, three new icebergs were formed due to the break up of the original iceberg



Breaking Off Filchner Ice Shelf Antarctica

