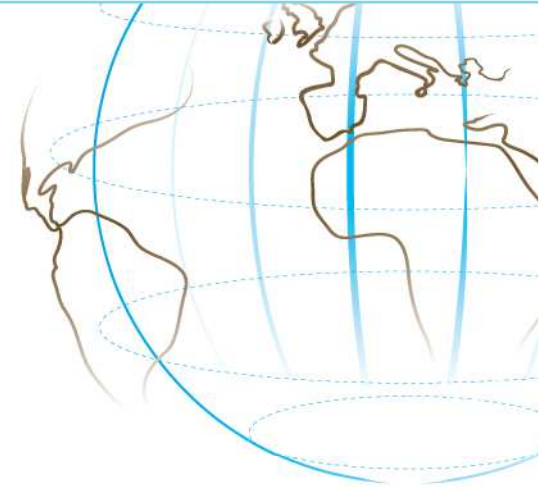




NORWEGIAN CENTRE FOR
INTERNATIONAL COOPERATION
IN HIGHER EDUCATION



Institutional Partnerships

Science Week 2009
Hanne Alver Krum



About SIU



- The Norwegian Centre for International Cooperation in Higher Education
- Public agency and competence centre under the auspices of the Norwegian Ministry of Education and Research
- Service agency and a partner for institutions of higher education
- Promotes internationalisation, cultural communication and international mobility

Key Figures



- Partnership programs administered by SIU:
 - North America
 - NUFU (North-South cooperation)
 - Tanzania
 - Russia
 - Western Balkans
 - South Caucasus and Central Asia
- Total budget frame 725 million NOK
- 210 different projects
- 122 partner institutions outside of Norway
- 33 participating countries ex. Norway

Institutional Partnerships

- One of five core policy areas in the External Dimension of the Bologna Process:
 - Strengthening Cooperation based on Partnership
- Institutional partnerships – central to the “new” internationalization of higher education
- Sustained by department or division of HEI rather than by the individual researchers involved
- Includes faculty, students and administrators



NTNU, California Polytechnic University,
UNIS and Rutgers University:
**NORUS - Technology Development for
Marine Monitoring and Ocean Observation**

Tools

- Exchange of students
- Exchange of lecturers
- Exchange of staff
- Common lectures, seminars, etc – on site or by video
- Common curriculum development
- Joint or double degrees



Bjerknes Centre for Climate Research and
University of Washington:
Climate Dynamics

Effects

- Links education and research
- Brings different research environments together
- Makes individual researchers open up their excellent networks
- Increases productivity in a broader sense:
 - More persons included
 - Better balanced partnerships
- Helps overcome barriers between different systems and institutions and strengthens reciprocity

- Cooperation in research encourages and strengthens student involvement
- Can cooperation in HE also encourage and strengthen researcher involvement?



University of Agder and
University of Nebraska, Omaha:
**Information Systems,
Public Administration**

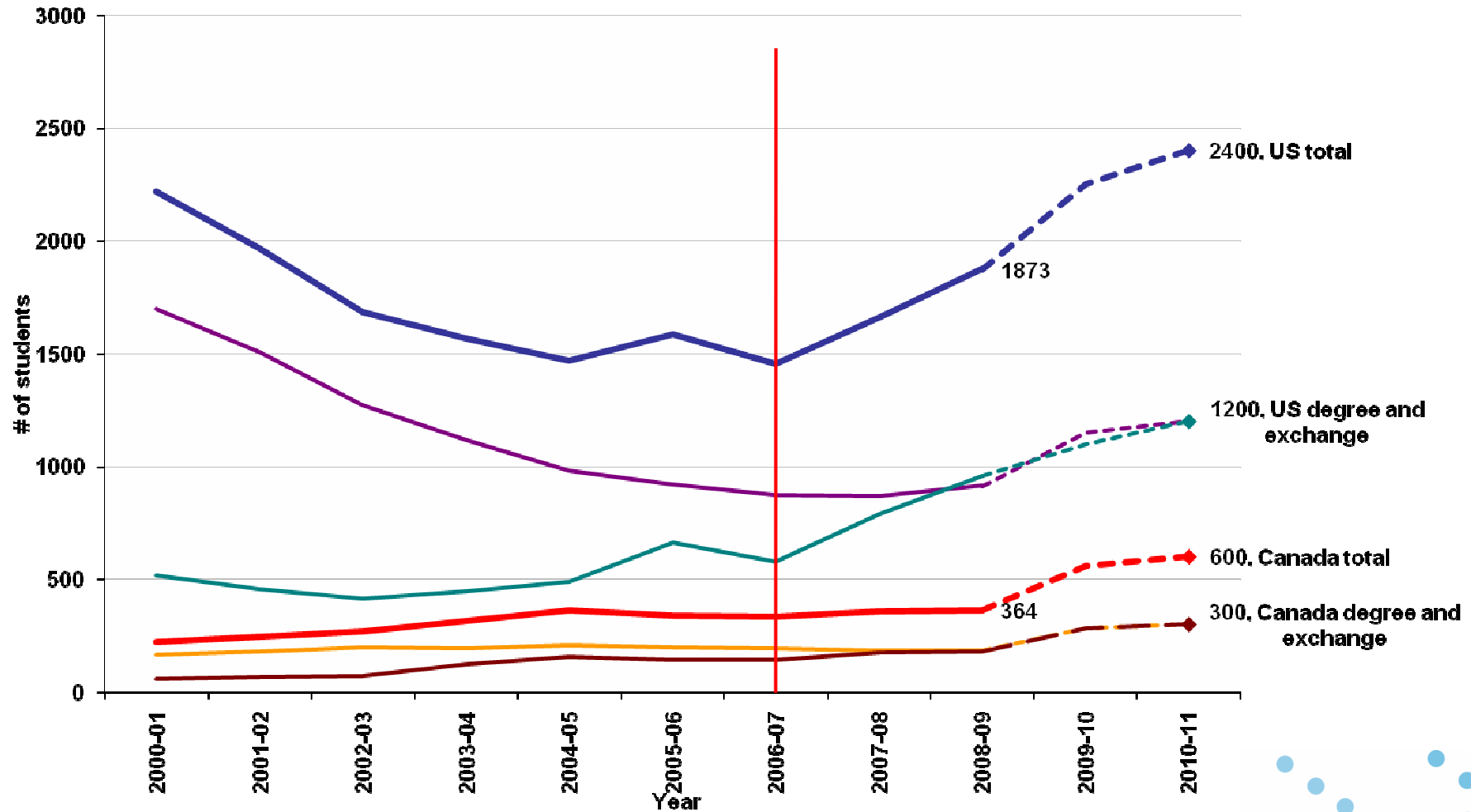


Results

- Increased student mobility
- Improved QA of student mobility
- Improved possibilities for combining student exchange with faculty interests and research
- Strengthened sustainability in collaborations

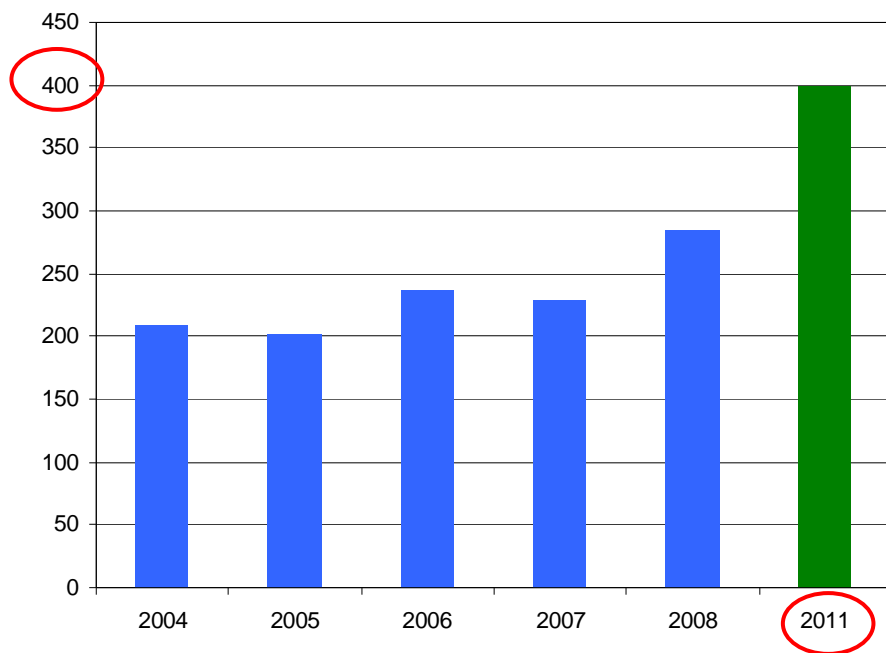


Norwegian students to US and Canada 2000-2011

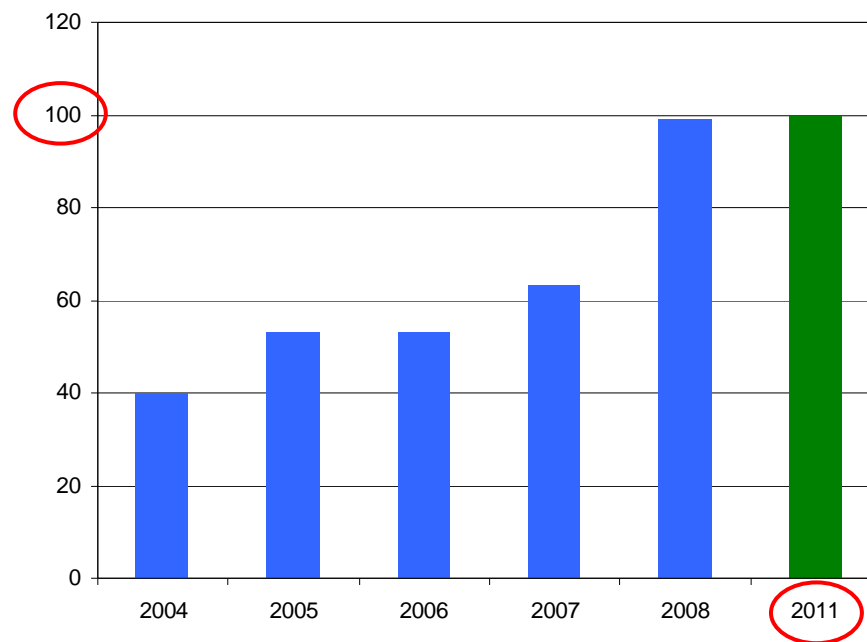


American students to Norway

USA



Canada





NORWEGIAN CENTRE FOR
INTERNATIONAL COOPERATION
IN HIGHER EDUCATION

POSTAL ADDRESS: P.O. BOX 7800, NO-5020 BERGEN, NORWAY OFFICE ADDRESS: VASKERELVEN 39
PHONE: +47 55 30 88 00 FAX: +47 55 30 88 01 E-MAIL: SIU@SIU.NO WEB: WWW.SIU.NO